

Cloud Nine – Club Lights

<p>DESK 1x Etc Smartfade 12/96</p> <p>DIMMERS 12x MA dimmer channel 2,3kW on Harting 16 in grid</p> <p>INTELLIGENT 11x Cls Par RGBAW+UW (plus 7 fixed around hall)</p> <p>DATA 4x Cat6A (2xFOH, 2x S.R.) 2x DMX in S.R. 4x DMX out (2x S.L., 2x S.R.) 2x DMX in FOH</p> <p>FRONTLIGHT 4x Desisti 1kW fresnel</p>	<p>LIGHTPLOT Separated</p> <p>PATCHLIST See page 2</p>
---	--

Cloud Nine - Club

Lights – Patchlist

DMX-PATCH CONVENTIONAL + LED (DMX-LINE 1)

#	Description	Where	Address	Remarks
1	Dimmers		1-12	
601	CLS rgbawuv LED Par	Stage odd	301	8channels: dim+rgbwap+strobe
602	CLS rgbawuv LED Par	Stage even	309	8channels: dim+rgbwap+strobe
603	CLS rgbawuv LED Par	House odd	317	8channels: dim+rgbwap+strobe
604	CLS rgbawuv LED Par	House even	325	8channels: dim+rgbwap+strobe

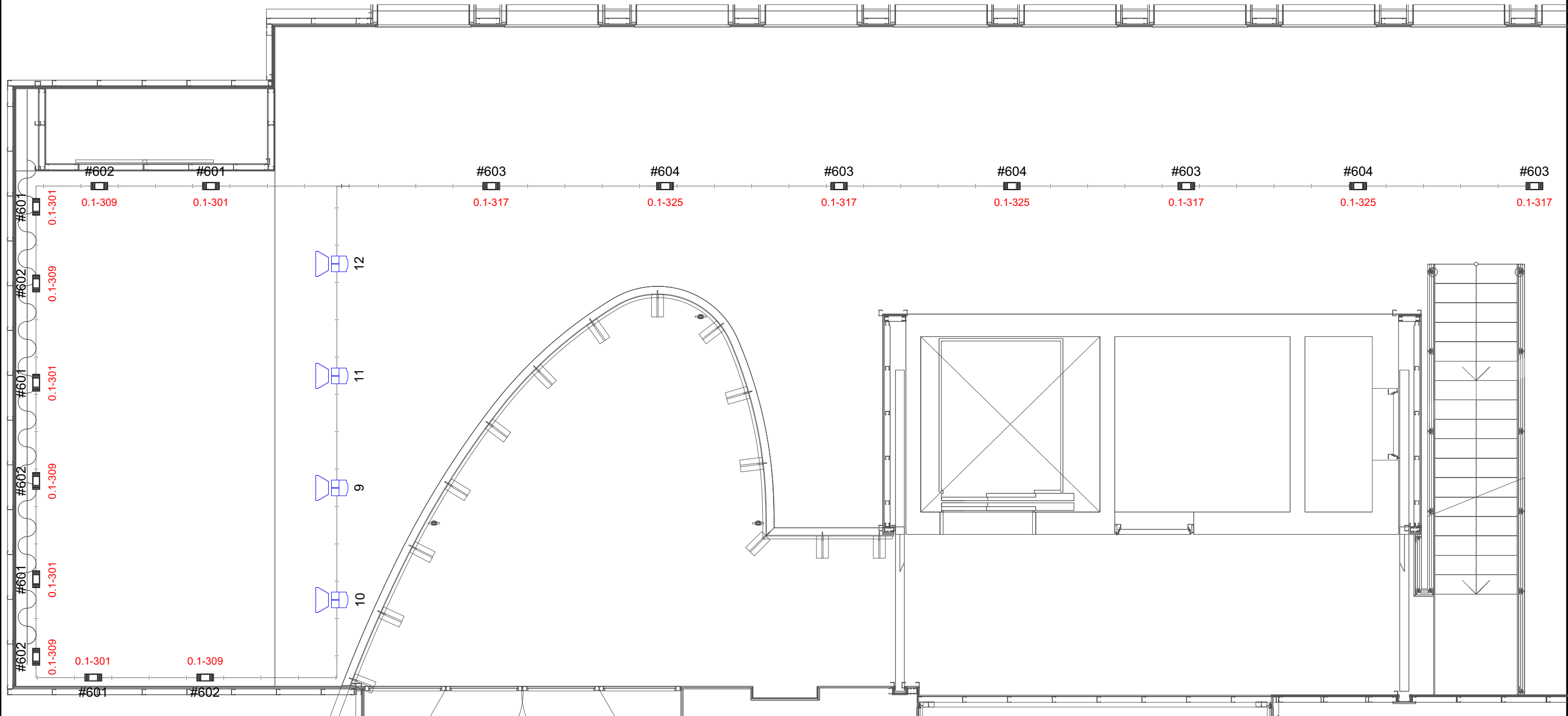
DIMMERPATCH

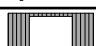
#	Description	Where	Address	Remarks
	Desisti	Front stage	9-10-11-12	

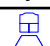
IP-ADRESSES LIGHTNETWORK

Location	Housedesk	Guestdesk	Cuecore	Nodes	Remotes
Grote zaal	2.1.0.1	2.1.0.2		2.1.1.1 2.1.1.2	2.1.2.1-100
Ronda	2.2.0.1	2.2.0.2	2.2.0.10	2.2.1.1 2.2.1.2	2.2.2.1-100
Pandora	2.3.0.1	2.3.0.2		2.3.1.1	2.3.2.1-100
Hertz	2.4.0.1	2.4.0.2	2.4.0.10	2.4.1.1	2.4.2.1-100
Cloud9	2.5.0.1	2.5.0.2		2.5.1.1	2.5.2.1-100
workshop	2.6.0.1	2.6.0.2		2.6.1.1	2.6.2.1-100
Plein 5&6	2.7.0.1		2.7.0.10		
Foyers			2.7.0.11	2.7.1.1 2.7.1.2 2.7.1.3 2.7.1.4	
Roof			2.8.0.10		
Rabo open stage			2.9.0.10		
Input node				2.10.1.1	
Output node				2.11.1.1	
House laptop	2.100.0.1				

TIVOLI VREDEN BURG



MovingLight: All Layers		
Qty	Sym	Type
17x		LedPar RGBAW+UV

Conventional: All Layers		
Qty	Sym	Type
4x		Fresnel 1 Kw

Show Name Club Overview		
Reference TivoliVredenburg	Drawn By TV	Date 01-05-2018
CAD File Name Club		