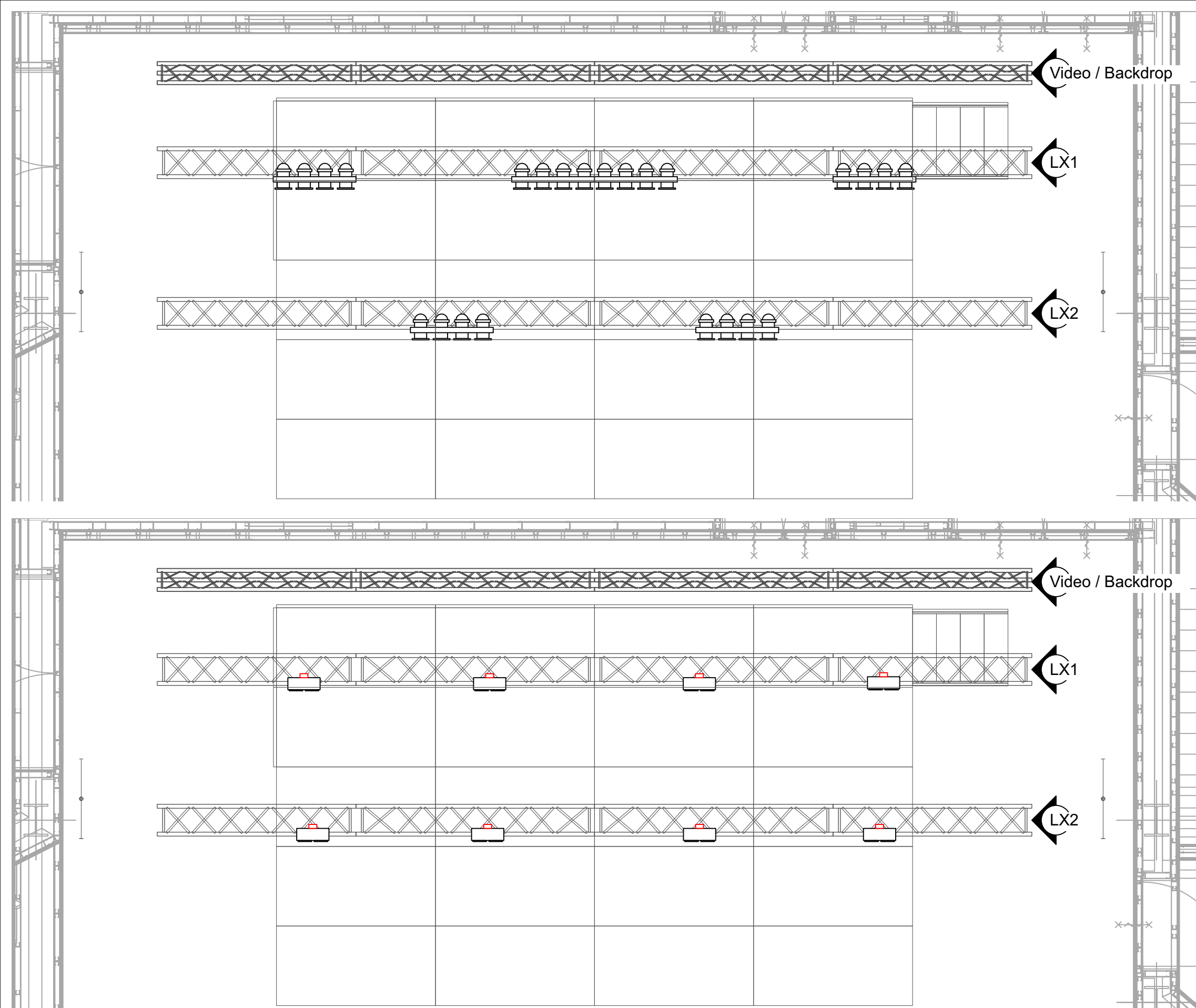

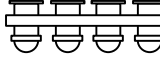
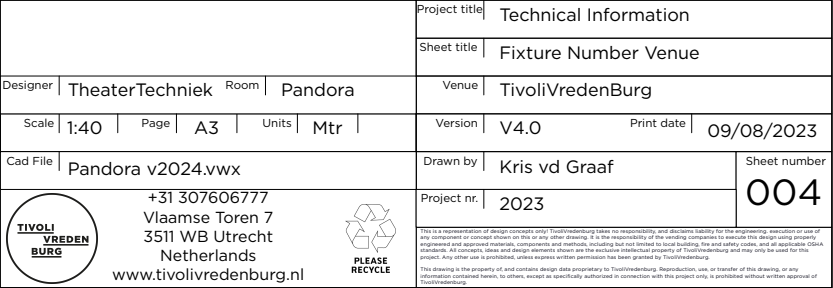


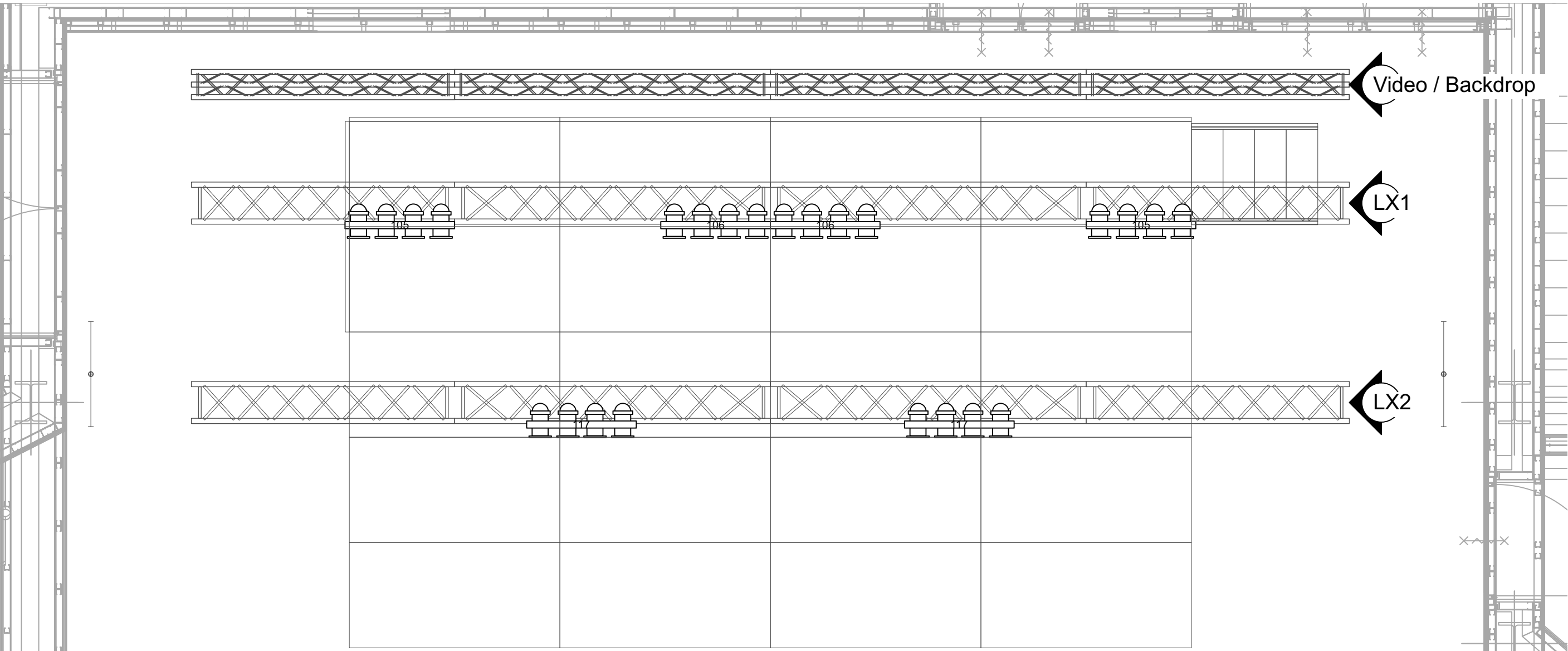
**TIVOLI
VREDEN
BURG**



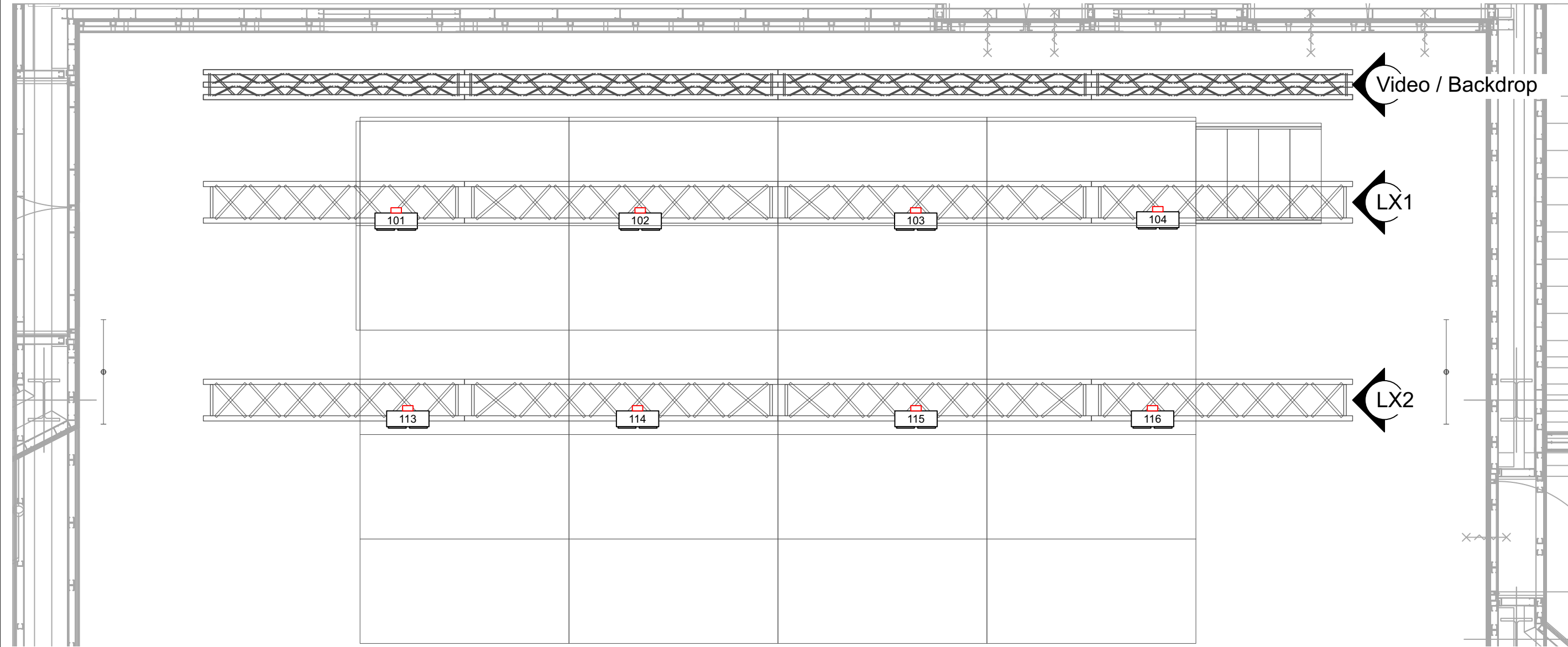
-  Showtec Stage Blinder 2 8
-  4-light Par 36 ACL bar 6



				Project title	Technical Information	
				Sheet title	Overview All	
Designer	TheaterTechniek	Room	Pandora	Venue	TivoliVredenBurg	
Scale	1:50	Page	A3	Units	Mtr	
Cad File				Version	V4.0	Print date
				Drawn by	Kris vd Graaf	09/08/2023
Pandora v2024.vwx				Project nr.	2023	Sheet number
				002		
<div><div><div>TIVOLI VREDEN BURG</div></div><div><div>+31 307606777</div><div>Vlaamse Toren 7</div><div>Netherlands</div><div>www.tivolivredenburg.nl</div></div></div>				<div><div><div>PLEASE RECYCLE</div></div><div><div>This is a reproduction of design created in 2023. This drawing is subject to responsibility and design liability for the engineering, supervision, use of any components or design elements or other or any other drawing. It is the responsibility of the drawing contractor to ensure the design using approved, engineered and approved materials, components and methods, including but not limited to local building, fire and safety codes, and all applicable CEN/EN standards. All copyright, trade and design elements shown are the exclusive intellectual property of TivoliVredenburg and may only be used for this project. Any other use is prohibited, unless express written permission has been granted by TivoliVredenburg.</div><div>This drawing is the property of and contains design data proprietary to TivoliVredenburg. Reproduction, use, or transfer of this drawing, or any information contained herein, to others, except as specifically authorized in connection with this project only, is prohibited without written approval of TivoliVredenburg.</div></div></div>		

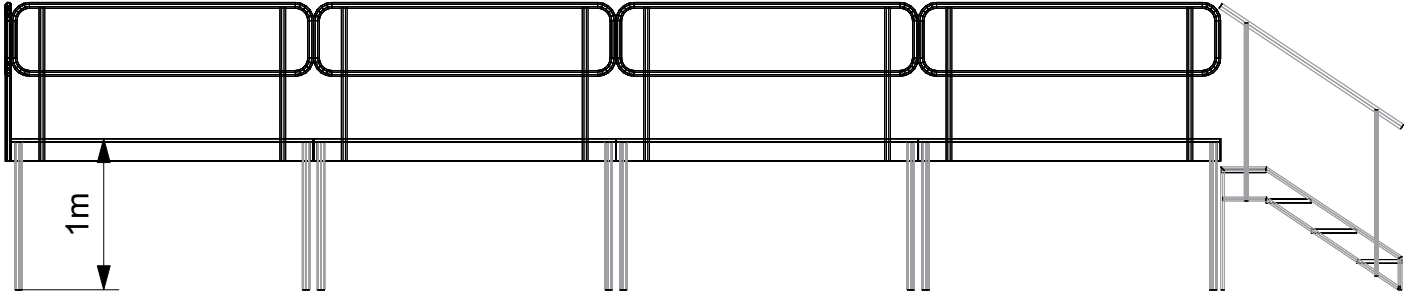
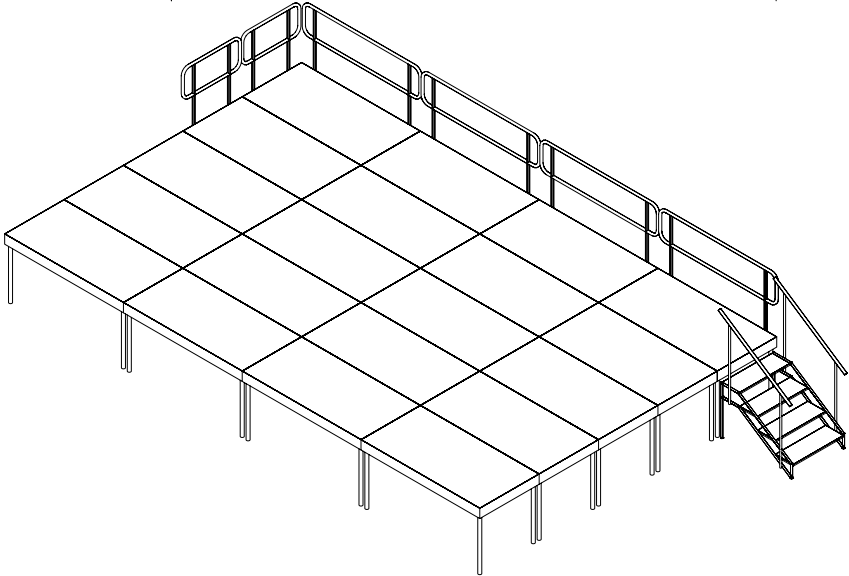
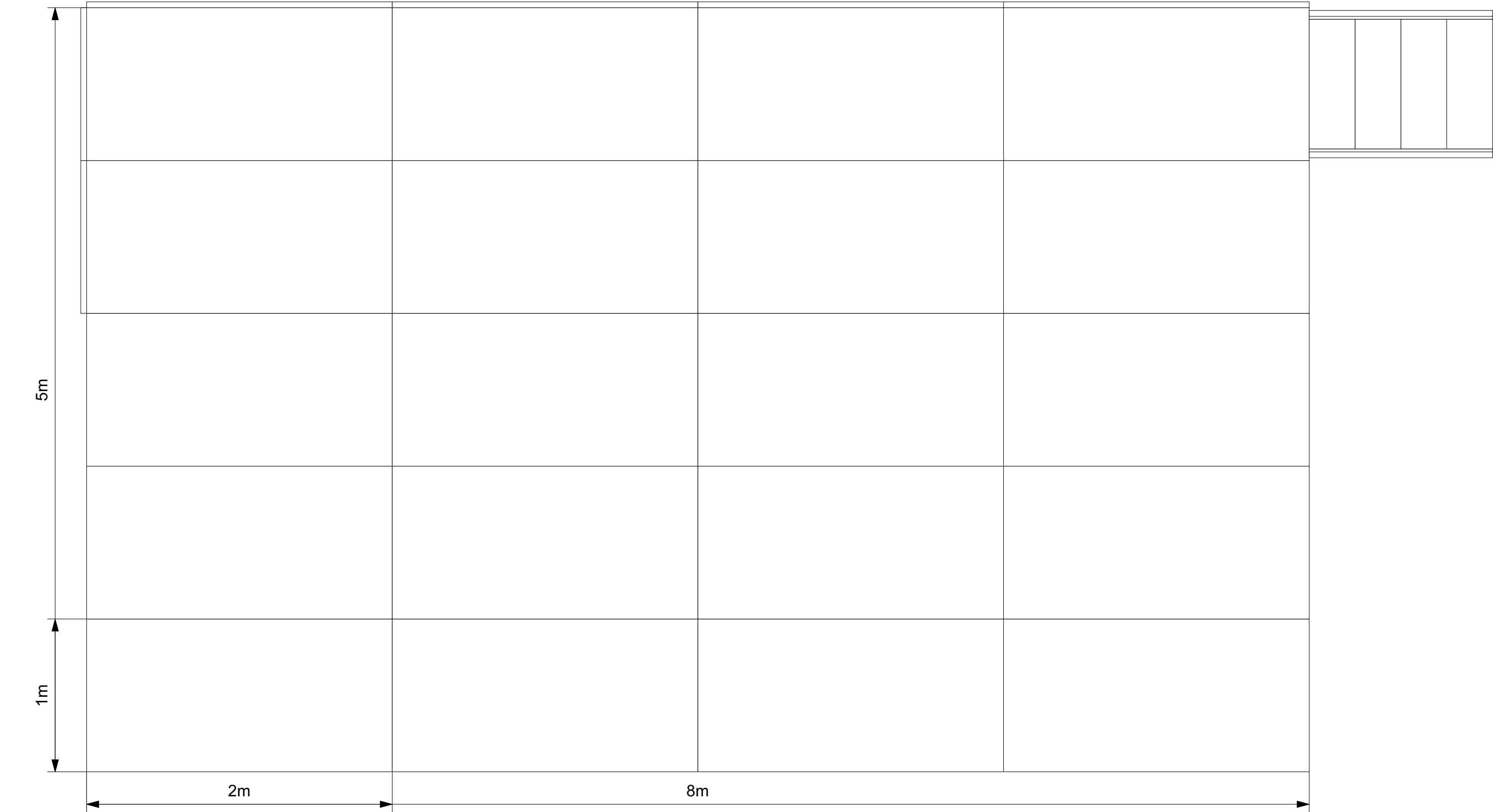




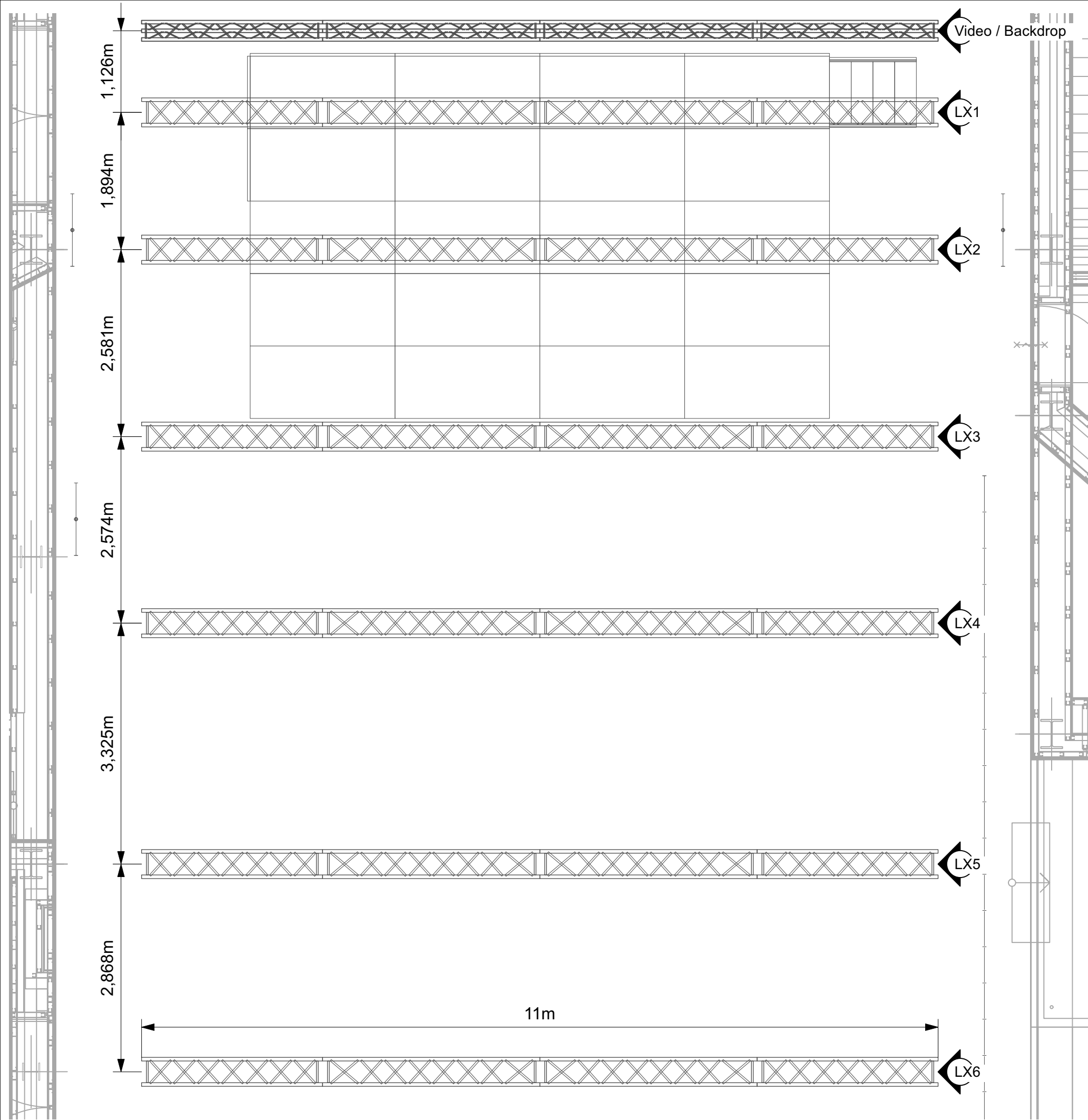
Designer TheaterTechniek Room Pandora					Project title Technical Information	
					Sheet title Fixture Number Stage	
Venue TivoliVredenburg					Sheet number 005	
Scale 1:40		Page A3	Units Mtr	Version V4.0		
Cad File Pandora v2024.vwx					Drawn by Kris vd Graaf	
<div><div><div>TIVOLI VREDEN BURG</div><div>+31 307606777 Vlaamse Toren 7 3511 WB Utrecht Netherlands www.tivoli-vredenburg.nl</div><div><div>PLEASE RECYCLE</div></div></div></div>					Project nr. 2023	
					<p><small>This is a representation of design concept only. Design responsibility is taken by the responsible party and design liability for the engineering, construction, use of any components or complete fixture or part of any other drawing is the responsibility of the drawing contractor to ensure the design meets all applicable codes, standards, engineering and approved materials, components and methods, including but not limited to local building, fire and safety codes, and all applicable CE marking requirements. All copyright, trade and design elements shown are the exclusive intellectual property of TivoliVredenburg and may only be used for this project. Any other use is prohibited, unless express written permission has been granted by TivoliVredenburg. This drawing is the property of and contains design data proprietary to TivoliVredenburg. Reproduction, use, or transfer of this drawing, or any information contained herein, to others, except as specifically authorized in connection with this project only, is prohibited without written approval of TivoliVredenburg.</small></p>	



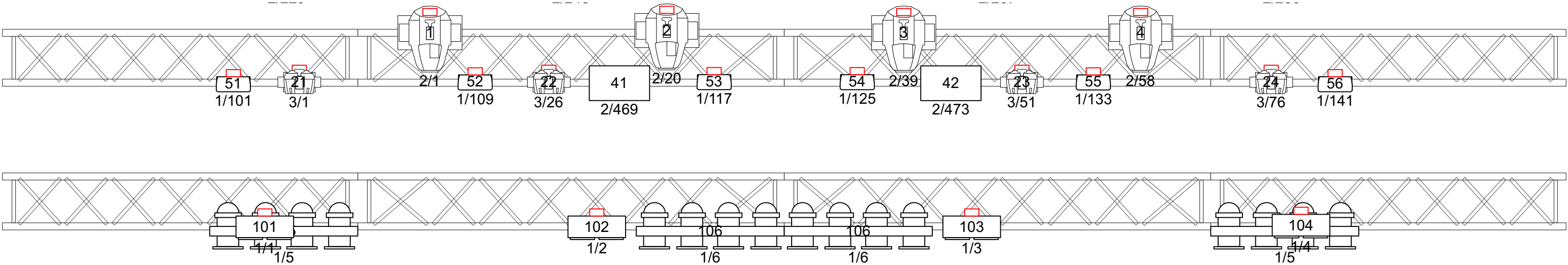
						Project title		Technical Information											
						Sheet title		Fixture Number Stage											
Designer		TheaterTechniek Room		Pandora		Venue		TivoliVredenburg											
Scale		1:40		Page		A3		Units		Mtr		Version		V4.0		Print date		09/08/2023	
Cad File		Pandora v2024.vwx										Drawn by		Kris vd Graaf		Sheet number		006	
		<div>+31 307606777 Vlaamse Toren 7 3511 WB Utrecht Netherlands www.tivolivredenburg.nl</div>										 PLEASE RECYCLE		Project nr.		2023		<small>This is a representation of design concept only. Design responsibility is taken by the designer, and design liability for the engineering, selection of use of any components or complete fixture or part of any other drawing, is the responsibility of the designer. The designer is not responsible for the design, engineering, construction and approved materials, components and methods, including but not limited to local building, fire and safety codes, and all applicable CMAA standards. All copyright, trade and design elements shown are the exclusive intellectual property of TivoliVredenBurg and may only be used for this project. Any other use is prohibited, unless express written permission has been granted by TivoliVredenBurg. This drawing is the property of and contains design data proprietary to TivoliVredenBurg. Reproduction, use, or transfer of this drawing, or any information contained herein, to others, except as specifically authorized in connection with this project only, is prohibited without written approval of TivoliVredenBurg.</small>	



						Project title		Technical Information			
						Sheet title		Stage Dimension			
Designer		TheaterTechniek		Room		Pandora		Venue		TivoliVredenBurg	
Scale		1:25		Page		A3		Units		Mtr	
Version		V4.0		Print date		09/08/2023					
Cad File		Pandora v2024.vwx						Drawn by		Kris vd Graaf	
Sheet number		007									
<div><div><div><div><div></div><div>TIVOLI</div><div>VREDEN</div><div>BURG</div></div></div><div><div>+31 307606777</div><div>Vlaamse Toren 7</div><div>3511 WB Utrecht</div><div>Netherlands</div><div>www.tivolivredenburg.nl</div></div></div></div>						<div><div><div><div></div><div></div><div></div></div></div><div>PLEASE RECYCLE</div></div>					



				Project title		Technical Information	
				Sheet title		Truss Dimension	
Designer		TheaterTechniek Room		Pandora		Venue	
				TivoliVredenburg			
Scale		1:55		Page		A3	
				Units		Mtr	
				Version		V4.0	
				Print date		09/08/2023	
Cad File		Pandora v2024.vwx				Drawn by	
						Kris vd Graaf	
						Sheet number	
						008	
Project nr.		2023					
<div><div><div><div>TIVOLI VREDEN BURG</div></div><div>+31 307606777 Vlaamse Toren 7 3511 WB Utrecht Netherlands www.tivoliivredenburg.nl</div></div><div><div><div>PLEASE RECYCLE</div></div><div><div>This is a reproduction of design created by Tivoli. Design drawings are liable to responsibility and design liability for the engineering, supervision and use of any components or complete pieces or parts or any other drawings. It is the responsibility of the drawing customer to ensure the design using approved, engineered and approved materials, components and methods, including but not limited to local building, fire and safety codes, and all applicable GAMA standards. All copyright, ideas and design elements shown are the exclusive intellectual property of TivoliVredenburg and may only be used for this project. Any other use is prohibited, unless express written permission has been granted by TivoliVredenburg. This drawing is the property of and contains design data proprietary to TivoliVredenburg. Reproduction, sale, or transfer of this drawing, or any information contained herein, to others, except as specifically authorized in connection with this project only, is prohibited without written approval of TivoliVredenburg.</div></div></div></div>							



Overview

Fixture ID	Unit Number	Universe	DMX Address	Position
Martin Mac Quatum Profile	1	2	1	LX1
Martin Mac Quatum Profile	2	2	20	
Martin Mac Quatum Profile	3	2	39	
Martin Mac Quatum Profile	4	2	58	
Martin Mac Aura XB	21	3	1	LX2
Martin Mac Aura XB	22	3	26	
Martin Mac Aura XB	23	3	51	
Martin Mac Aura XB	24	3	76	
Martin Atomic 3000 DMX	41	2	469	LX3
Martin Atomic 3000 DMX	42	2	473	
Chauvet COLORdash Par Hex 12	51	1	101	LX4
Chauvet COLORdash Par Hex 12	52	1	109	
Chauvet COLORdash Par Hex 12	53	1	117	
Chauvet COLORdash Par Hex 12	54	1	125	
Chauvet COLORdash Par Hex 12	55	1	133	
Chauvet COLORdash Par Hex 12	56	1	141	
Showtec Stage Blinder 2	101	1	1	LX5
Showtec Stage Blinder 2	102	1	2	
Showtec Stage Blinder 2	103	1	3	
Showtec Stage Blinder 2	104	1	4	
4-light Par 36 ACL bar	105	1	5	LX6
4-light Par 36 ACL bar	105	1	5	
4-light Par 36 ACL bar	106	1	6	
4-light Par 36 ACL bar	106	1	6	

DesignerTheaterTechniekRoomPandora

Scale1:27PageA3UnitsMtr

Cad FilePandora v2024.vwx

TIVOLI
VREDEN
BURG

+31 307606777
Vlaamse Toren 7
3511 WB Utrecht
Netherlands
www.tivolivredenburg.nl

PLEASE
RECYCLE

Project titleTechnical Information

Sheet titleLX1

VenueTivoliVredenBurg

VersionV4.0Print date09/08/2023

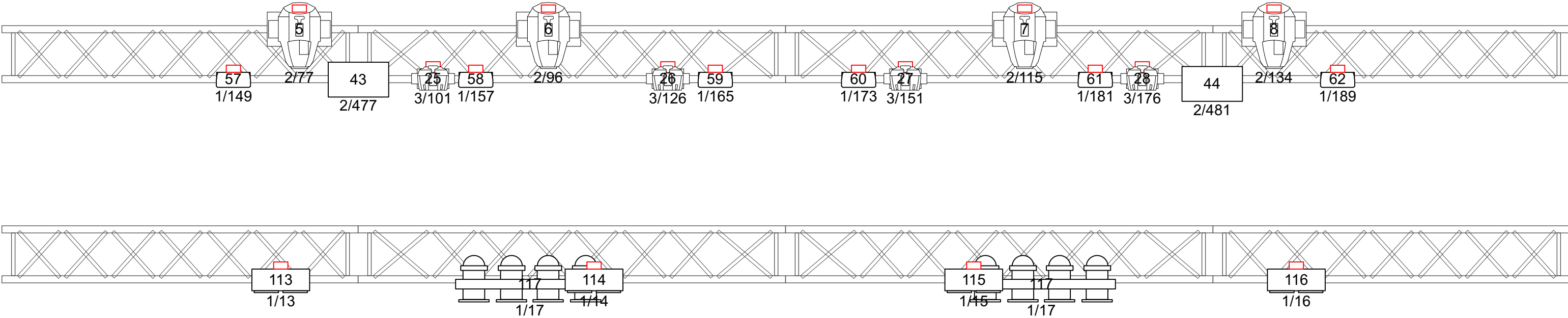
Drawn byKris vd Graaf

Project nr.2023



Sheet number014

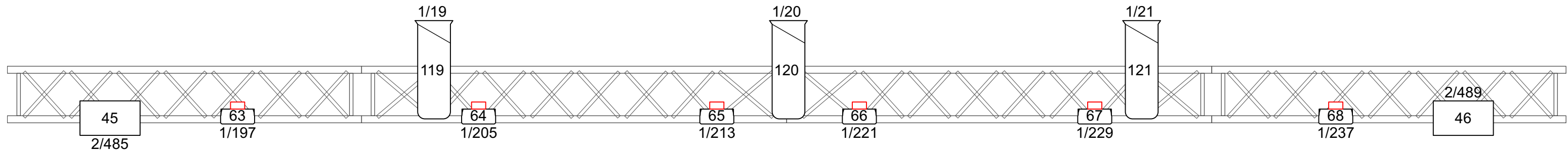
This is a representation of design created using TivoliVredenburg software. It is the responsibility of the client to ensure that the design meets all relevant engineering and approved materials, components and methods, including but not limited to local building, fire and safety codes, and all applicable CEN/EN standards. All copyright, trade and design elements shown are the exclusive intellectual property of TivoliVredenburg and may only be used for this project. Any other use is prohibited, unless express written permission has been granted by TivoliVredenburg.

This drawing is the property of and contains design data proprietary to TivoliVredenburg. Reproduction, use, or transfer of this drawing, or any information contained herein, to others, except as specifically authorized in connection with this project only, is prohibited without written approval of TivoliVredenburg.



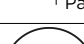

Overview				
Fixture ID	Unit Number	Universe	DMX Address	Position
Martin Mac Quatum Profile	5	2	77	LX2
Martin Mac Quatum Profile	6	2	96	
Martin Mac Quatum Profile	7	2	115	
Martin Mac Quatum Profile	8	2	134	
Martin Mac Aura XB	25	3	101	
Martin Mac Aura XB	26	3	126	
Martin Mac Aura XB	27	3	151	
Martin Mac Aura XB	28	3	176	
Martin Atomic 3000 DMX	43	2	477	
Martin Atomic 3000 DMX	44	2	481	
Chauvet COLORdash Par Hex 12	57	1	149	
Chauvet COLORdash Par Hex 12	58	1	157	
Chauvet COLORdash Par Hex 12	59	1	165	
Chauvet COLORdash Par Hex 12	60	1	173	
Chauvet COLORdash Par Hex 12	61	1	181	
Chauvet COLORdash Par Hex 12	62	1	189	
Showtec Stage Blinder 2	113	1	13	
Showtec Stage Blinder 2	114	1	14	
Showtec Stage Blinder 2	115	1	15	
Showtec Stage Blinder 2	116	1	16	
4-light Par 36 ACL bar	117	1	17	
4-light Par 36 ACL bar	117	1	17	

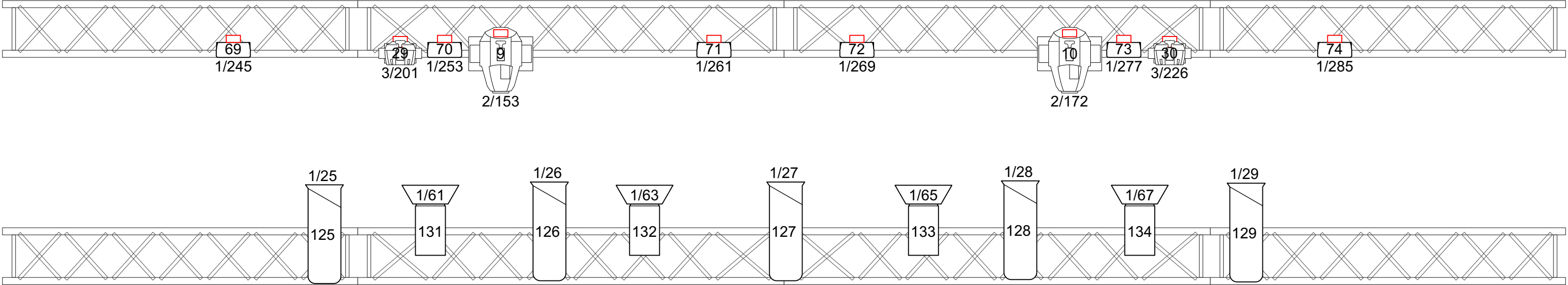
				Project title		Technical Information				
				Sheet title		LX2				
Designer		TheaterTechniek		Room	Pandora					
Scale		1:27		Page	A3		Units	Mtr		
Cad File		Pandora v2024.vwx		Version		V4.0		Print date	09/08/2023	
		+31 307606777 Vlaamse Toren 7 3511 WB Utrecht Netherlands www.tivolivredenburg.nl		Drawn by		Kris vd Graaf		Sheet number		
				Project nr.		2023		015		
		PLEASE RECYCLE		<small>This is a representation of design concept only. Design responsibility is taken by the responsible and design liability for the engineering, supervision and use of any components or complete fixture or part or any other drawing is the responsibility of the drawing contractor to ensure the design meets all relevant engineering and approved materials, components and methods, including but not limited to local building, fire and safety codes, and all applicable CECA standards. All copyright, trade and design elements shown are the exclusive intellectual property of TivoliVredenburg and may only be used for this project. Any other use is prohibited, unless express written permission has been granted by TivoliVredenburg.</small>						
				<small>This drawing is the property of and contains design data proprietary to TivoliVredenburg. Reproduction, use, or transfer of this drawing, or any information contained herein, to others, except as specifically authorized in connection with this project only, is prohibited without written approval of TivoliVredenburg.</small>						



Overview

Fixture ID	Unit Number	Universe	DMX Address	Position
Martin Atomic 3000 DMX	45	2	485	LX3
Martin Atomic 3000 DMX	46	2	489	
Chauvet COLORdash Par Hex 12	63	1	197	
Chauvet COLORdash Par Hex 12	64	1	205	
Chauvet COLORdash Par Hex 12	65	1	213	
Chauvet COLORdash Par Hex 12	66	1	221	
Chauvet COLORdash Par Hex 12	67	1	229	
Chauvet COLORdash Par Hex 12	68	1	237	
Robert Juliat 614 SX	119	1	19	
Robert Juliat 614 SX	120	1	20	
Robert Juliat 614 SX	121	1	21	
Robert Juliat 614 SX	127	1	27	

					Project title		Technical Information				
					Sheet title		LX3				
Designer		TheaterTechniek Room		Pandora		Venue		TivoliVredenburg			
Scale		1:27		Page		A3		Units		Mtr	
Version		V4.0		Print date		09/08/2023					
Cad File		Pandora v2024.vwx		Drawn by		Kris vd Graaf		Sheet number		016	
		+31 307606777 Vlaamse Toren 7 3511 UV Utrecht Netherlands www.tivolivredenburg.nl				Project nr.		2023			
<p>This drawing is the property of and contains design data proprietary to TivoliVredenburg. Reproduction, use or transfer of this drawing, or any information contained herein, to others, except as specifically authorized in connection with the project only, is prohibited without written approval of the project manager. Any reuse or modification of this drawing without the written approval of the project manager is prohibited and may result in legal action. Any other use is prohibited, unless express written permission has been granted by TivoliVredenburg.</p> <p>This drawing is the property of and contains design data proprietary to TivoliVredenburg. Reproduction, use or transfer of this drawing, or any information contained herein, to others, except as specifically authorized in connection with the project only, is prohibited without written approval of the project manager. Any reuse or modification of this drawing without the written approval of the project manager is prohibited and may result in legal action. Any other use is prohibited, unless express written permission has been granted by TivoliVredenburg.</p>											



Overview

Fixture ID	Unit Number	Universe	DMX Address	Position
Martin Mac Quatum Profile	9	2	153	LX4
Martin Mac Quatum Profile	10	2	172	
Martin Mac Aura XB	29	3	201	
Martin Mac Aura XB	30	3	226	
Chauvet COLORdash Par Hex 12	69	1	245	
Chauvet COLORdash Par Hex 12	70	1	253	
Chauvet COLORdash Par Hex 12	71	1	261	
Chauvet COLORdash Par Hex 12	72	1	269	
Chauvet COLORdash Par Hex 12	73	1	277	
Chauvet COLORdash Par Hex 12	74	1	285	
Robert Juliat 614 SX	125	1	25	
Robert Juliat 614 SX	126	1	26	
Robert Juliat 614 SX	128	1	28	
Robert Juliat 614 SX	129	1	29	
Chauvet Ovation F-265 WW	131	1	61	
Chauvet Ovation F-265 WW	132	1	63	
Chauvet Ovation F-265 WW	133	1	65	
Chauvet Ovation F-265 WW	134	1	67	

Project title

Technical Information

Sheet title

LX4

Designer

TheaterTechniek

Room

Pandora

Venue

TivoliVredenBurg

Scale

1:55

Page

A3

Units

Mtr

Version

V4.0

Print date

09/08/2023

Cad File

Pandora v2024.vwx

Drawn by

Kris vd Graaf

Project nr.

2023

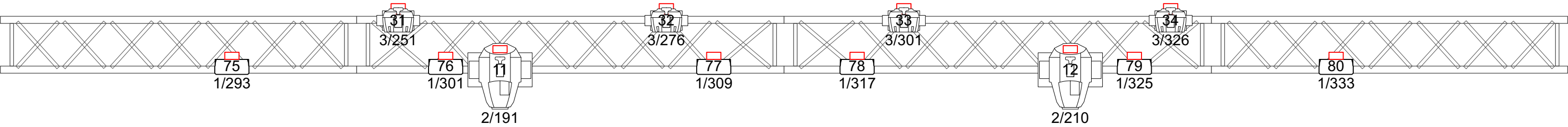
Sheet number

017



TIVOLI
VREDEN
BURG

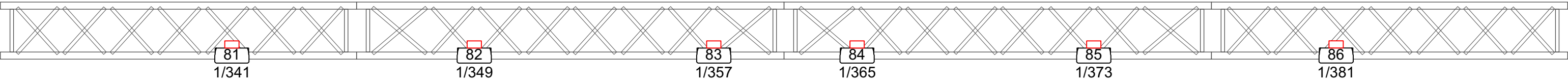
+31 307606777
Vlaamse Toren 7
3511 WB Utrecht
Netherlands
www.tivoliivredenburg.nl

PLEASE
RECYCLE





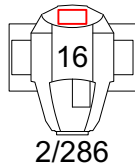
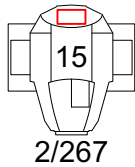
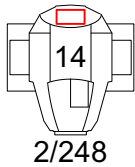
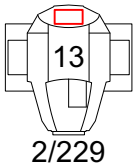
Overview				
Fixture ID	Unit Number	Universe	DMX Address	Position
Martin Mac Quatum Profile	11	2	191	LX5
Martin Mac Quatum Profile	12	2	210	
Martin Mac Aura XB	31	3	251	
Martin Mac Aura XB	32	3	276	
Martin Mac Aura XB	33	3	301	
Martin Mac Aura XB	34	3	326	
Chauvet COLORdash Par Hex 12	75	1	293	
Chauvet COLORdash Par Hex 12	76	1	301	
Chauvet COLORdash Par Hex 12	77	1	309	
Chauvet COLORdash Par Hex 12	78	1	317	
Chauvet COLORdash Par Hex 12	79	1	325	
Chauvet COLORdash Par Hex 12	80	1	333	

				Project title Technical Information	
				Sheet title LX5	
Designer TheaterTechniek		Room Pandora	Venue TivoliVredenBurg		
Scale 1:27	Page A3	Units Mtr	Version V4.0	Print date 09/08/2023	
Cad File Pandora v2024.vwx			Drawn by Kris vd Graaf	Sheet number 018	
<div><div></div><div><div>+31 307606777</div><div>Vlaamse Toren 7</div><div>Netherlands</div><div>www.tivolivredenburg.nl</div></div><div><div>PLEASE RECYCLE</div></div></div>			Project nr. 2023		
<small>This is a representation of design concept only. Design ownership is held by the designer, and design liability for the engineering, specification, use of any components or complete fixture or sub or any other drawing, is the responsibility of the drawing contractor to ensure the design using approved, engineered and approved materials, components and methods, including but not limited to local building, fire and safety codes, and all applicable CEN/EN standards. All copyright, ideas and design elements shown are the exclusive intellectual property of TivoliVredenBurg and may only be used for this project. Any other use is prohibited, unless express written permission has been granted by TivoliVredenBurg. This drawing is the property of and contains design data proprietary to TivoliVredenBurg. Reproduction, use, or transfer of this drawing, or any information contained herein, to others, except as specifically authorized in connection with this project only, is prohibited without written approval of TivoliVredenBurg.</small>					





Overview				
Fixture ID	Unit Number	Universe	DMX Address	Position
Chauvet COLORdash Par Hex 12	81	1	341	LX6
Chauvet COLORdash Par Hex 12	82	1	349	
Chauvet COLORdash Par Hex 12	83	1	357	
Chauvet COLORdash Par Hex 12	84	1	365	
Chauvet COLORdash Par Hex 12	85	1	373	
Chauvet COLORdash Par Hex 12	86	1	381	

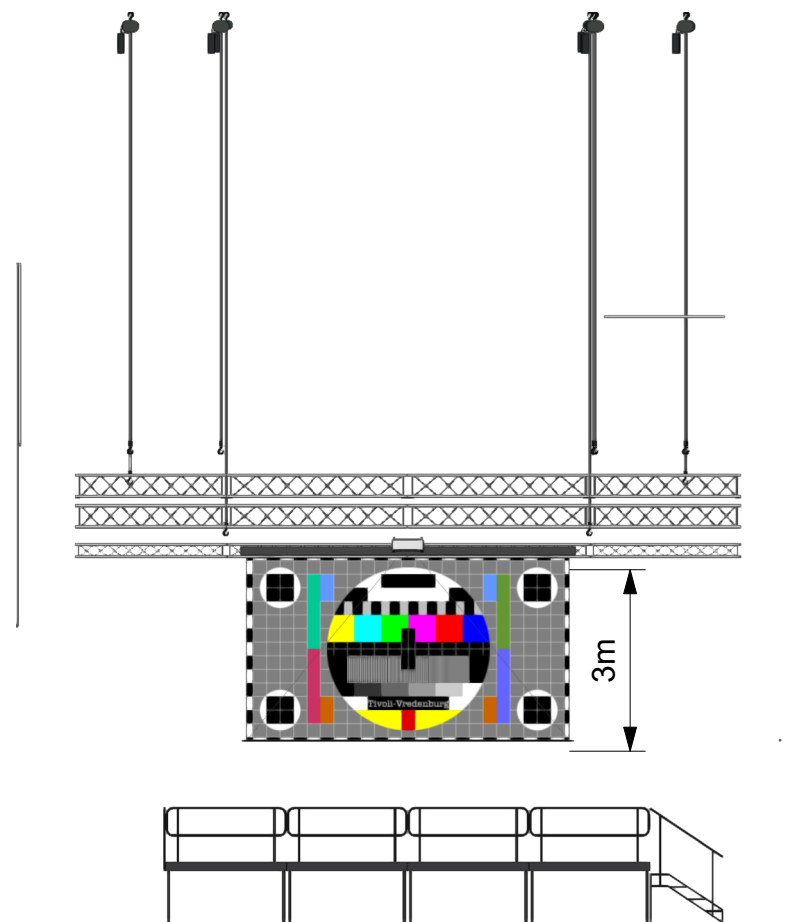
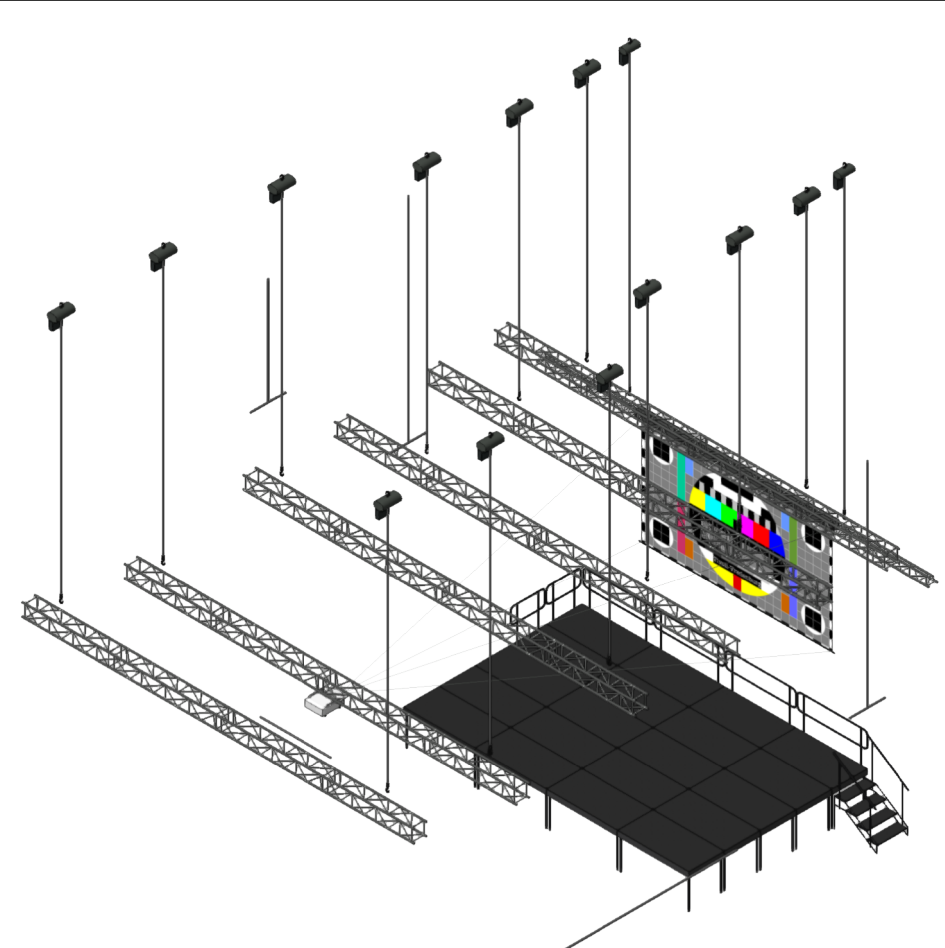
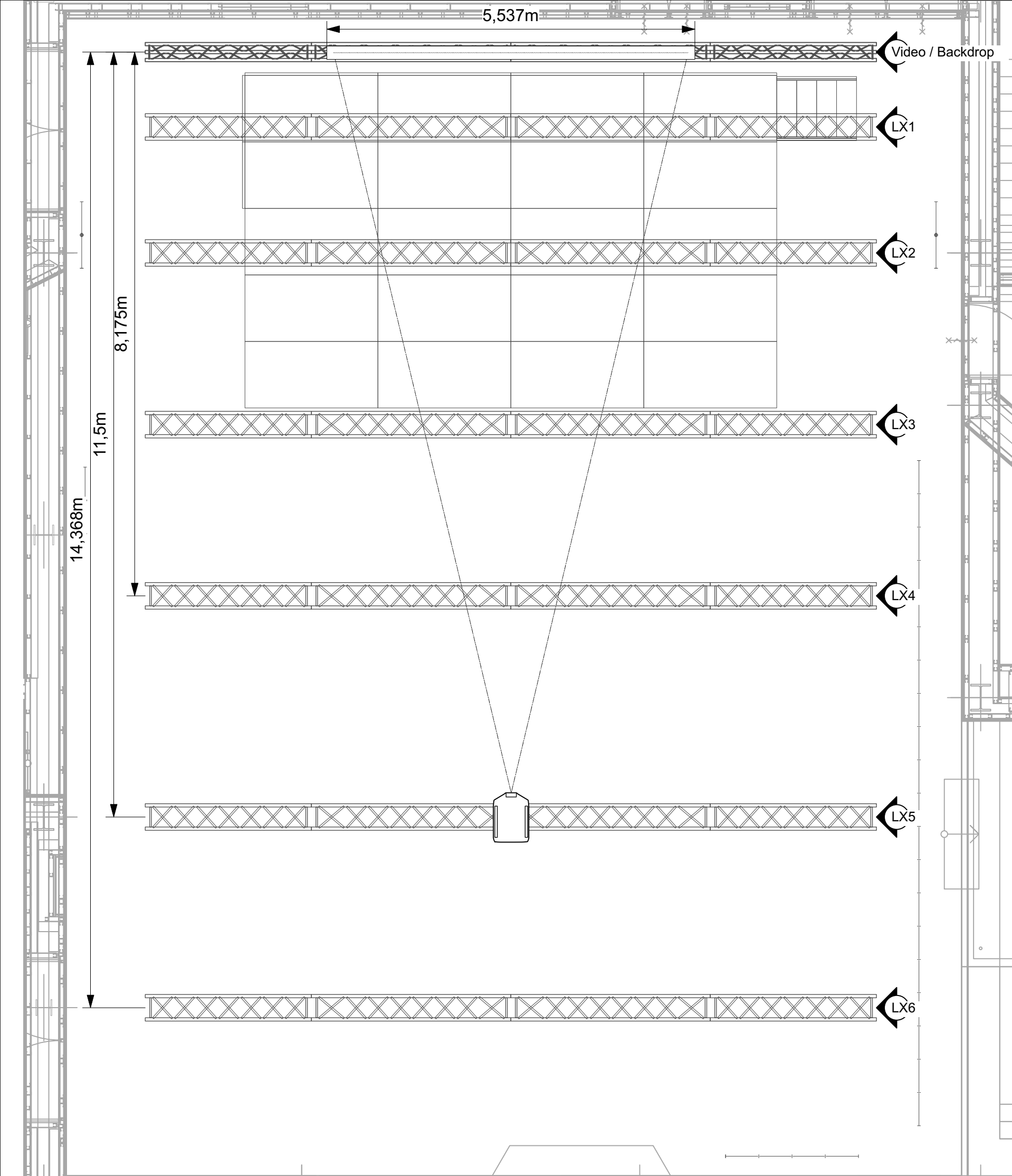
				Project title		Technical Information			
				Sheet title		LX6			
Designer		TheaterTechniek		Room	Pandora				
		Venue		TivoliVredenBurg					
Scale	1:55	Page	A3	Units	Mtr	Version	V4.0	Print date	09/08/2023
Cad File	Pandora v2024.vwx					Drawn by	Kris vd Graaf		Sheet number 019
<div><div></div><div><div>+31 307606777</div><div>Vlaamse Toren 7</div><div>3511 WB Utrecht</div><div>Netherlands</div><div>www.tivolivredenburg.nl</div></div><div><div>PLEASE RECYCLE</div></div></div>						Project nr.		2023	
						<small>This is a reproduction of design created by Tivoli. This drawing is solely the responsibility and design liability for the engineering, production and use of any component or complete fixture or part or any other drawing. It is the responsibility of the installing contractor to ensure the design meets all safety, engineering and approved materials, components and methods, including but not limited to local building, fire and safety codes, and all applicable CECA standards. All copyright, trade and design elements shown are the exclusive intellectual property of Tivolivredenburg and may only be used for this project. Any other use is prohibited, unless express written permission has been granted by Tivolivredenburg. This drawing is the property of and contains design data proprietary to Tivolivredenburg. Reproduction, use, or transfer of this drawing, or any information contained herein, in whole, except as specifically authorized in connection with this project only, is prohibited without written approval of Tivolivredenburg.</small>			





Overview

Fixture ID	Unit Number	Universe	DMX Address	Position
Martin Mac Quatum Profile	13	2	229	Floor
Martin Mac Quatum Profile	14	2	248	
Martin Mac Quatum Profile	15	2	267	
Martin Mac Quatum Profile	16	2	286	
Martin Mac Aura XB	35	2	351	
Martin Mac Aura XB	36	2	376	
Martin Mac Aura XB	37	2	401	
Martin Mac Aura XB	38	2	426	
MDG ATMe	1001	2	507	
American DJ Entour Cyclone	1002	2	510	
Martin JEM ZR44	1003	2	511	
American DJ Entour Cyclone	1004	2	512	

				Project title Technical Information	
				Sheet title Floor	
Designer TheaterTechniek		Room Pandora	Venue TivoliVredenBurg		
Scale 1:27	Page A3	Units Mtr	Version V4.0	Print date 09/08/2023	
Cad File Pandora v2024.vwx			Drawn by Kris vd Graaf	Sheet number	
			Project nr. 2023	020	
		+31 307606777 Vlaamse Toren 7 3511 WB Utrecht Netherlands www.tivolivredenborg.nl		 PLEASE RECYCLE	
<small>This is a reproduction of design created by Tivoli. Design ownership is held by Tivoli. Designing and building for the program is a reproduction of use of any trademark or copyright. This is the responsibility of the design company. It is the responsibility of the design company to ensure the design is safe, sound, engineered and approved materials, components and methods, including but not limited to local building, fire and safety codes, and all applicable CEN/A standards. All copyright, trade and design elements shown are the exclusive intellectual property of TivoliVredenBurg and may only be used for this project. Any other use is prohibited, unless express written permission has been granted by TivoliVredenBurg. This drawing is the property of and contains design data proprietary to TivoliVredenBurg. Reproduction, use, or transfer of this drawing, or any information contained herein, to others, except as specifically authorized in connection with this project only, is prohibited without written approval of TivoliVredenBurg.</small>					



					Project title		Technical Information		
					Sheet title		Video		
Designer		TheaterTechniek Room		Pandora		Venue		TivoliVredenburg	
Scale		1:60		Page		A3		Units	Mtr
Version		V4.0		Print date		09/08/2023			
Cad File		Pandora v2024.vwx			Drawn by		Kris vd Graaf		Sheet number
					Project nr.		2023		009
		+31 307606777 Vlaamse Toren 7 3511 WB Utrecht Netherlands www.tivolivredenburg.nl					PLEASE RECYCLE		
<p>This is a representation of design concepts only. Tivoli Vredenburg is not liable for the representativeness, and disclaims liability for the representativeness, based on use of the design concepts. The design concepts are not intended to be used for construction. The design concepts are not intended to be used for construction. The design concepts are not intended to be used for construction. The design concepts are not intended to be used for construction. The design concepts are not intended to be used for construction. The design concepts are not intended to be used for construction. The design concepts are not intended to be used for construction. The design concepts are not intended to be used for construction. The design concepts are not intended to be used for construction. The design concepts are not intended to be used for construction. The design concepts are not intended to be used for construction. The design concepts are not intended to be used for construction. The design concepts are not intended to be used for construction. The design concepts are not intended to be used for construction. The design concepts are not intended to be used for construction. The design concepts are not intended to be used for construction. The design concepts are not intended to be used for construction. The design concepts are not intended to be used for construction. The design concepts are not intended to be used for construction. The design concepts are not intended to be used for construction. The design concepts are not intended to be used for construction. The design concepts are not intended to be used for construction. The design concepts are not intended to be used for construction. The design concepts are not intended to be used for construction. The design concepts are not intended to be used for construction. The design concepts are not intended to be used for construction. The design concepts are not intended to be used for construction. The design concepts are not intended to be used for construction. The design concepts are not intended to be used for construction. The design concepts are not intended to be used for construction. The design concepts are not intended to be used for construction. The design concepts are not intended to be used for construction. The design concepts are not intended to be used for construction. The design concepts are not intended to be used for construction. The design concepts are not intended to be used for construction. The design concepts are not intended to be used for construction. The design concepts are not intended to be used for construction. The design concepts are not intended to be used for construction. The design concepts are not intended to be used for construction. The design concepts are not intended to be used for construction. The design concepts are not intended to be used for construction. The design concepts are not intended to be used for construction. The design concepts are not intended to be used for construction. The design concepts are not intended to be used for construction. The design concepts are not intended to be used for construction. The design concepts are not intended to be used for construction. The design concepts are not intended to be used for construction. The design concepts are not intended to be used for construction. The design concepts are not intended to be used for construction. The design concepts are not intended to be used for construction. The design concepts are not intended to be used for construction. The design concepts are not intended to be used for construction. The design concepts are not intended to be used for construction. The design concepts are not intended to be used for construction. The design concepts are not intended to be used for construction. The design concepts are not intended to be used for construction. The design concepts are not intended to be used for construction. The design concepts are not intended to be used for construction. The design concepts are not intended to be used for construction. The design concepts are not intended to be used for construction. The design concepts are not intended to be used for construction. The design concepts are not intended to be used for construction. The design concepts are not intended to be used for construction. The design concepts are not intended to be used for construction. The design concepts are not intended to be used for construction. The design concepts are not intended to be used for construction. The design concepts are not intended to be used for construction. The design concepts are not intended to be used for construction. The design concepts are not intended to be used for construction. The design concepts are not intended to be used for construction. The design concepts are not intended to be used for construction. The design concepts are not intended to be used for construction. The design concepts are not intended to be used for construction. The design concepts are not intended to be used for construction. The design concepts are not intended to be used for construction. The design concepts are not intended to be used for construction. The design concepts are not intended to be used for construction. The design concepts are not intended to be used for construction. The design concepts are not intended to be used for construction. The design concepts are not intended to be used for construction. The design concepts are not intended to be used for construction. The design concepts are not intended to be used for construction. The design concepts are not intended to be used for construction. The design concepts are not intended to be used for construction. The design concepts are not intended to be used for construction. The design concepts are not intended to be used for construction. The design concepts are not intended to be used for construction. The design concepts are not intended to be used for construction. The design concepts are not intended to be used for construction. The design concepts are not intended to be used for construction. The design concepts are not intended to be used for construction. The design concepts are not intended to be used for construction. The design concepts are not intended to be used for construction. The design concepts are not intended to be used for construction. The design concepts are not intended to be used for construction. The design concepts are not intended to be used for construction. The design concepts are not intended to be used for construction. The design concepts are not intended to be used for construction. The design concepts are not intended to be used for construction. The design concepts are not intended to be used for construction. The design concepts are not intended to be used for construction. The design concepts are not intended to be used for construction. The design concepts are not intended to be used for construction. The design concepts are not intended to be used for construction. The design concepts are not intended to be used for construction. The design concepts are not intended to be used for construction. The design concepts are not intended to be used for construction. The design concepts are not intended to be used for construction. The design concepts are not intended to be used for construction. The design concepts are not intended to be used for construction. The design concepts are not intended to be used for construction. The design concepts are not intended to be used for construction. The design concepts are not intended to be used for construction. The design concepts are not intended to be used for construction. The design concepts are not intended to be used for construction. The design concepts are not intended to be used for construction. The design concepts are not intended to be used for construction. The design concepts are not intended to be used for construction. The design concepts are not intended to be used for construction. The design concepts are not intended to be used for construction. The design concepts are not intended to be used for construction. The design concepts are not intended to be used for construction. The design concepts are not intended to be used for construction. The design concepts are not intended to be used for construction. The design concepts are not intended to be used for construction. The design concepts are not intended to be used for construction. The design concepts are not intended to be used for construction. The design concepts are not intended to be used for construction. The design concepts are not intended to be used for construction. The design concepts are not intended to be used for construction. The design concepts are not intended to be used for construction. The design concepts are not intended to be used for construction. The design concepts are not intended to be used for construction. The design concepts are not intended to be used for construction. The design concepts are not intended to be used for construction. The design concepts are not intended to be used for construction. The design concepts are not intended to be used for construction. The design concepts are not intended to be used for construction. The design concepts are not intended to be used for construction. The design concepts are not intended to be used for construction. The design concepts are not intended to be used for construction. The design concepts are not intended to be used for construction. The design concepts are not intended to be used for construction. The design concepts are not intended to be used for construction. The design concepts are not intended to be used for construction. The design concepts are not intended to be used for construction. The design concepts are not intended to be used for construction. The design concepts are not intended to be used for construction. The design concepts are not intended to be used for construction. The design concepts are not intended to be used for construction. The design concepts are not intended to be used for construction. The design concepts are not intended to be used for construction. The design concepts are not intended to be used for construction. The design concepts are not intended to be used for construction. The design concepts are not intended to be used for construction. The design concepts are not intended to be used for construction. The design concepts are not intended to be used for construction. The design concepts are not intended to be used for construction. The design concepts are not intended to be used for construction. The design concepts are not intended to be used for construction. The design concepts are not intended to be used for construction. The design concepts are not intended to be used for construction. The design concepts are not intended to be used for construction. The design concepts are not intended to be used for construction. The design concepts are not intended to be used for construction. The design concepts are not intended to be used for construction. The design concepts are not intended to be used for construction. The design concepts are not intended to be used for construction. The design concepts are not intended to be used for construction. The design concepts are not intended to be used for construction. The design concepts are not intended to be used for construction. The design concepts are not intended to be used for construction. The design concepts are not intended to be used for construction. The design concepts are not intended to be used for construction. The design concepts are not intended to be used for construction. The design concepts are not intended to be used for construction. The design concepts are not intended to be used for construction. The design concepts are not intended to be used for construction. The design concepts are not intended to be used for construction. The design concepts are not intended to be used for construction. The design concepts are not intended to be used for construction. The design concepts are not intended to be used for construction. The design concepts are not intended to be used for construction. The design concepts are not intended to be used for construction. The design concepts are not intended to be used for construction. The design concepts are not intended to be used for construction. The design concepts are not intended to be used for construction. The design concepts are not intended to be used for construction. The design concepts are not intended to be used for construction. The design concepts are not intended to be used for construction. The design concepts are not intended to be used for construction. The design concepts are not intended to be used for construction. The design concepts are not intended to be used for construction. The design concepts are not intended to be used for construction. The design concepts are not intended to be used for construction. The design concepts are not intended to be used for construction. The design concepts are not intended to be used for construction. The design concepts are not intended to be used for construction. The design concepts are not intended to be used for construction. The design concepts are not intended to be used for construction. The design concepts are not intended to be used for construction. The design concepts are not intended to be used for construction. The design concepts are not intended to be used for construction. The design concepts are not intended to be used for construction. The design concepts are not intended to be used for construction. The design concepts are not intended to be used for construction. The design concepts are not intended to be used for construction. The design concepts are not intended to be used for construction. The design concepts are not intended to be used for construction. The design concepts are not intended to be used for construction. The design concepts are not intended to be used for construction. The design concepts are not intended to be used for construction. The design concepts are not intended to be used for construction. The design concepts are not intended to be used for construction. The design concepts are not intended to be used for construction. The design concepts are not intended to be used for construction. The design concepts are not intended to be used for construction. The design concepts are not intended to be used for construction. The design concepts are not intended to be used for construction. The design concepts are not intended to be used for construction. The design concepts are not intended to be used for construction. The design concepts are not intended to be used for construction. The design concepts are not intended to be used for construction. The design concepts are not intended to be used for construction. The design concepts are not intended to be used for construction. The design concepts are not intended to be used for construction. The design concepts are not intended to be used for construction. The design concepts are not intended to be used for construction. The design concepts are not intended to be used for construction. The design concepts are not intended to be used for construction. The design concepts are not intended to be used for construction. The design concepts are not intended to be used for construction. The design concepts are not intended to be used for construction. The design concepts are not intended to be used for construction. The design concepts are not intended to be used for construction. The design concepts are not intended to be used for construction. The design concepts are not intended to be used for construction. The design concepts are not intended to be used for construction. The design concepts are not intended to be used for construction. The design concepts are not intended to be used for construction. The design concepts are not intended to be used for construction. The design concepts are not intended to be used for construction. The design concepts are not intended to be used for construction. The design concepts are not intended to be used for construction. The design concepts are not intended to be used for construction. The design concepts are not intended to be used for construction. The design concepts are not intended to be used for construction. The design concepts are not intended to be used for construction. The design concepts are not intended to be used for construction. The design concepts are not intended to be used for construction. The design concepts are not intended to be used for construction. The design concepts are not intended to be used for construction. The design concepts are not intended to be used for construction. The design concepts are not intended to be used for construction. The design concepts are not intended to be used for construction. The design concepts are not intended to be used for construction. The design concepts are not intended to be used for construction. The design concepts are not intended to be used for construction. The design concepts are not intended to be used for construction. The design concepts are not intended to be used for construction. The design concepts are not intended to be used for construction. The design concepts are not intended to be used for construction. The design concepts are not intended to be used for construction. The design concepts are not intended to be used for construction. The design concepts are not</p>									