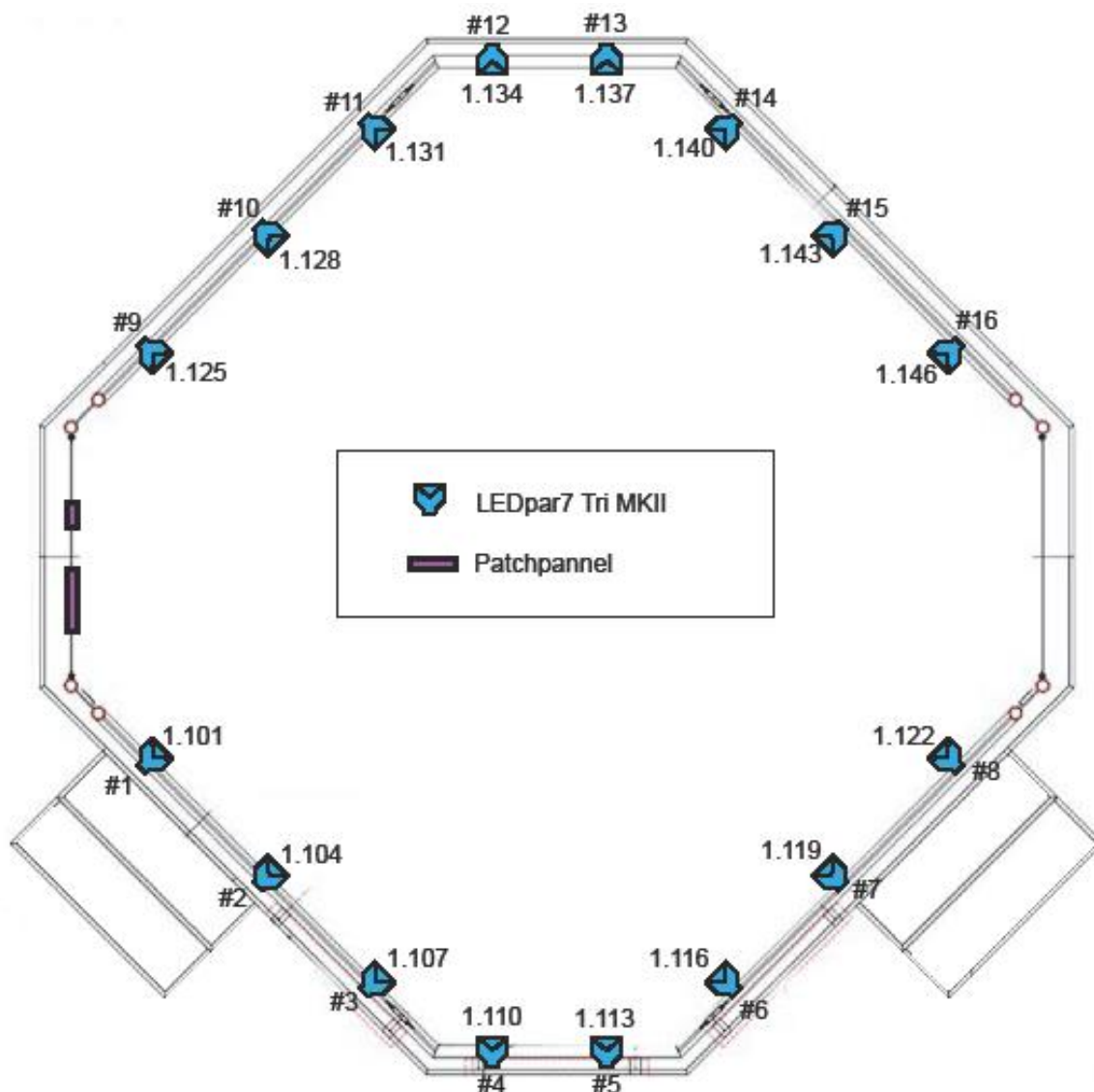


# Rabo Open Stage Lights

<p><b>DESK</b> 1x Elation SDC12 1x CueCore</p> <p><b>Stage - Intelligent</b> 16x Showtec Ledpar7 Tri MKII</p> <p><b>Stage - Data</b> 1x Cat6A Art-net in 1x XLR5 Dmx in, triggers only</p>	<p><b>STANDARD LIGHTPLOT</b> See page 1</p> <p><b>PATCHLIST</b> See page 2</p> <p><b>PLEASE NOTE</b> The DMX-input is for DMX-triggersignals to the CueCore only. All the separate Ledpar7's can be controlled by the Artnet-in.</p>
--	--

## Lights – Plot



# Rabo Open Stage Lights – Patchlist

## DMX-PATCH

Art-Net 0.1

(Artnet only, not connected to DMX-in)

#	Description	Where	Address		Remarks
	Free		001	100	
001	Ledpar Showtech 7 Tri MKII	Front-pipe	101		3 ch, RGB
002	Ledpar Showtech 7 Tri MKII	Front-pipe	104		3 ch, RGB
003	Ledpar Showtech 7 Tri MKII	Front-pipe	107		3 ch, RGB
004	Ledpar Showtech 7 Tri MKII	Front-pipe	110		3 ch, RGB
005	Ledpar Showtech 7 Tri MKII	Front-pipe	113		3 ch, RGB
006	Ledpar Showtech 7 Tri MKII	Front-pipe	116		3 ch, RGB
007	Ledpar Showtech 7 Tri MKII	Front-pipe	119		3 ch, RGB
008	Ledpar Showtech 7 Tri MKII	Front-pipe	122		3 ch, RGB
009	Ledpar Showtech 7 Tri MKII	Back-pipe	125		3 ch, RGB
010	Ledpar Showtech 7 Tri MKII	Back-pipe	128		3 ch, RGB
011	Ledpar Showtech 7 Tri MKII	Back-pipe	131		3 ch, RGB
012	Ledpar Showtech 7 Tri MKII	Back-pipe	134		3 ch, RGB
013	Ledpar Showtech 7 Tri MKII	Back-pipe	137		3 ch, RGB
014	Ledpar Showtech 7 Tri MKII	Back-pipe	140		3 ch, RGB
015	Ledpar Showtech 7 Tri MKII	Back-pipe	143		3 ch, RGB
016	Ledpar Showtech 7 Tri MKII	Back-pipe	146		3 ch, RGB
	Free		149	512	

## DMX-PATCH

DMX-in 0.1

(DMX only, not connected to Artnet-in)

#	Description	Where	Address		Remarks
	Free		001	499	
001	CueCore		500	511	Trigger Cues

## IP-ADRESSES LIGHTNETWORK

Location	Housedesk	Guestdesk	Cuecore	Nodes	Remotes
Grote zaal	2.1.0.1	2.1.0.2		2.1.1.1	2.1.2.1-100
Ronda	2.2.0.1	2.2.0.2	2.2.0.10	2.2.1.1 2.2.1.2	2.2.2.1-100
Pandora	2.3.0.1	2.3.0.2		2.3.1.1	2.3.2.1-100
Hertz	2.4.0.1	2.4.0.2	2.4.0.10	2.4.1.1	2.4.2.1-100
Cloud9	2.5.0.1	2.5.0.2		2.5.1.1	2.5.2.1-100
workshop	2.6.0.1	2.6.0.2		2.6.1.1	2.6.2.1-100
Foyers	2.7.0.1		2.7.0.10	2.7.1.1 2.7.1.2 2.7.1.3 2.7.1.4	
Roof			2.8.0.10		
Rabo open stage			2.9.0.10		
Input node				2.10.1.1	
Output node				2.11.1.1	
House laptop	2.100.0.1				